

# Northeast Philly

Bus Revolution Webinar  
May 1, 2023



# Agenda

- 1 Introduction
- 2 What We Heard
- 3 Review Routes and Proposed Changes
- 4 Questions & Answers



# Who's In the Room?

- **Registration Question:**
- What bus route(s) do you take most frequently?
  - 14 and 15 most frequently mentioned
  - See table (right)
- **We have some questions for you, too!**

Route	Count*
14	7
58	5
19	4
20	4
25	3
26	3
1	2
5	2
21	2
28	2
44	2
50	2
65	2
67	2
70	2
88	2

\*Among 27 registrants, as of 5/1/23



**First off,  
thank you!**

**Thank you for providing feedback**  
and letting us know what worked—  
and what didn't work—on the  
Fall 2022 Draft Network.



**We  
hear  
you!**



**Here's  
what we  
heard!**

# Feedback Themes

- Transfers and one-seat rides
- Routes being eliminated
- Personal safety and security
- Access to schools
- Frequency
- Weekend service
- Simplicity

Why are you going to make me transfer?



# Parts of the Draft Network to Keep



## Increased frequency of service

Riders like increased service levels on weekend days and evenings.



## Simpler network overall to enhance reliability

Riders and residents liked the simplicity of the updated network.



## Focus on connectivity

New connections so people can get further, faster.



We  
heard:

Why are you  
going to make  
me **transfer**?



## We've updated the draft network to:

- Reduce the number of trips that require a transfer
- Prioritize **one-seat rides** for short trips
- Prioritize trips with strong ridership

### *What's a one-seat ride?*

*A one-seat ride is when you can use one bus to get you to your final destination.*

We  
heard:

What's going on  
with **school  
service**? How is  
my child going to  
get to school?



## We've updated the draft network to:

- Met with school district to better understand their needs and concerns
- Show SEPTA bus routes that connect to schools
- Add bus service back at key times to make sure there won't be overcrowding when students are traveling

We  
heard:

I don't feel **safe**  
**waiting** for  
SEPTA. Please  
don't make me  
transfer.



## We've updated the draft network to:

- Reduce the number of trips that require a transfer, including to the MFL or BSL
- Start working with partners across the region to make bus stops and transfer location safer
- Continue to focus on safety and security so everyone feels comfortable using SEPTA

### *What is the SCOPE program?*

Scope is SEPTA's strategy to address safety, security and the challenges of the vulnerable population on our system.

We  
heard:

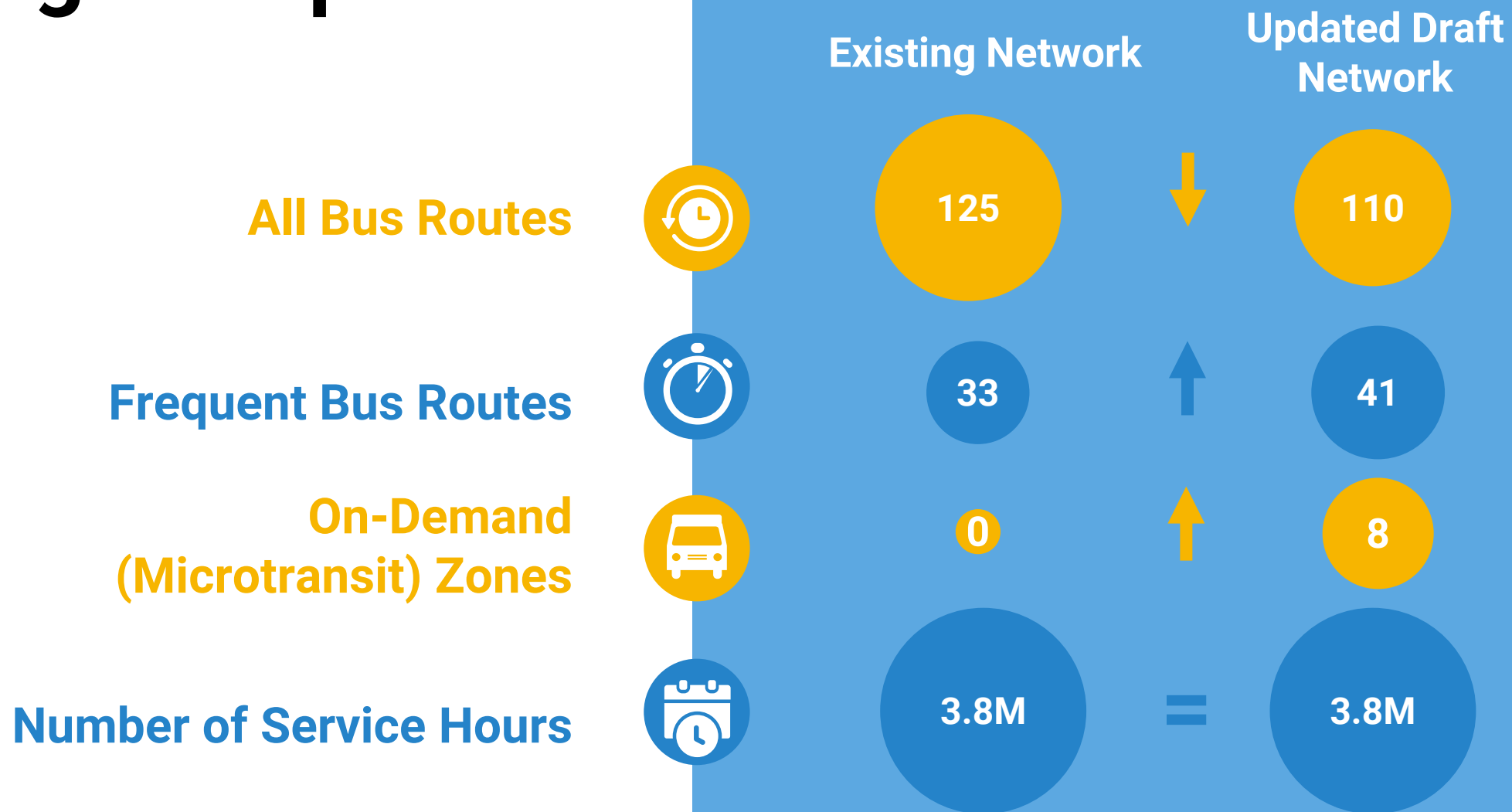
I don't  
understand these  
**route numbers.**  
What's going on?




## We've updated the draft network to:

- Use as much of the existing route numbers as possible
- Keep a reference to the ones we used before, for people who want them.
- Keep talking to riders about how we number and name our bus routes

# Existing vs. Updated Draft





**Let's look  
at some  
bus routes**

# Route 14 (14A)

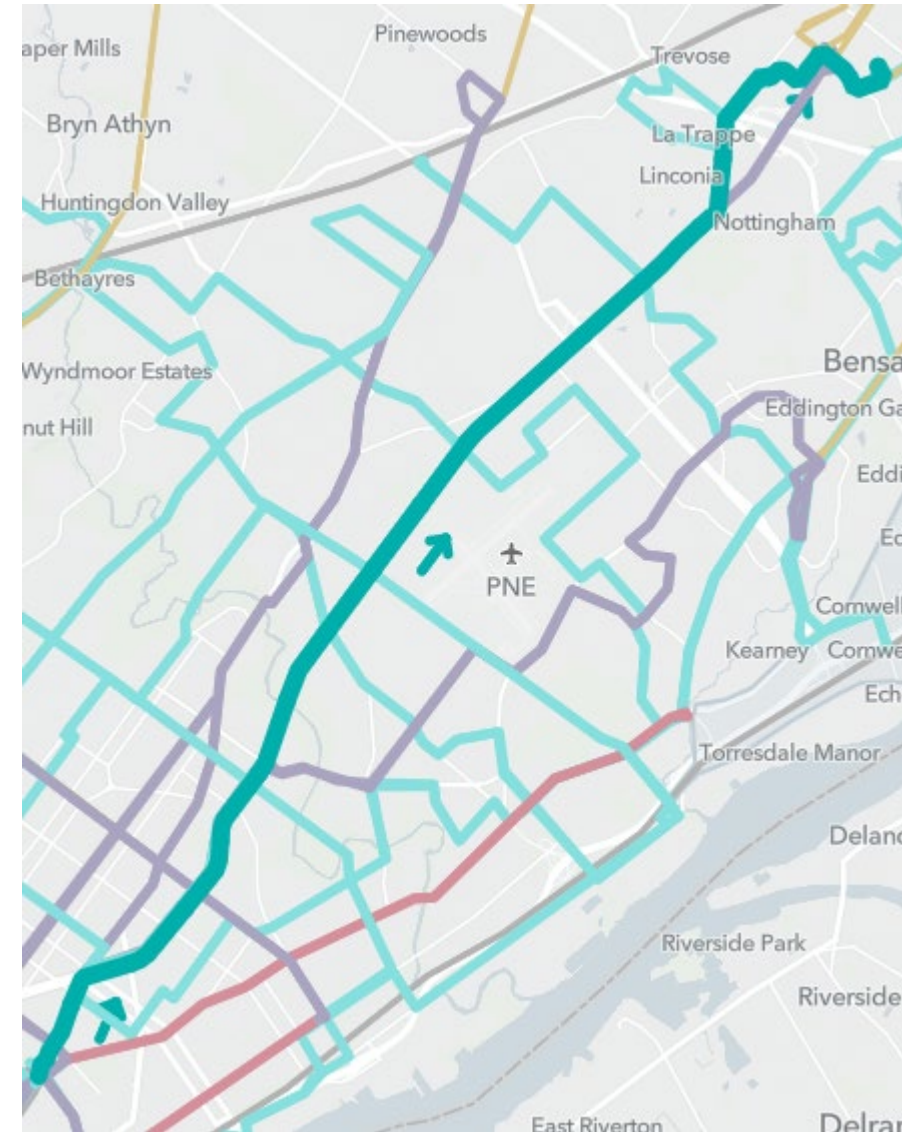
**Frankford Transportation Center to Neshaminy Mall (and Oxford Valley Mall)**



## Proposed Route 14 (14A)

Frankford Transportation Center to Neshaminy Mall (and Oxford Valley Mall)

- No alignment change.
- Local service on Roosevelt Boulevard with service every 30 minutes.
- Works in parallel with Direct Bus, which provides frequent service.
- Also works in parallel with Route 14A, which continues to Oxford Valley Mall.

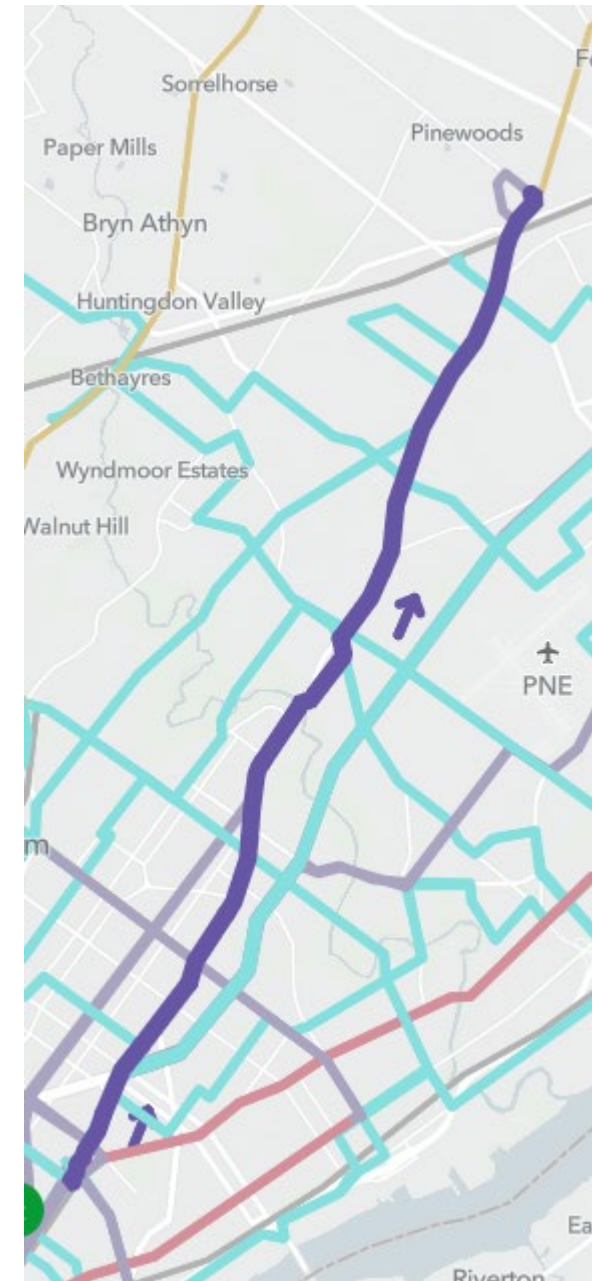


**Route 58 (58A)**  
**Frankford Transportation Center to Bustleton and County Line (and Neshaminy Mall)**



**Proposed Route 58 (58A)**  
**FTC to Bustleton and County Line (and Neshaminy Mall)**

- No alignment change to bus route.
- Maintains **frequent service** (every 15 minutes) on weekdays and weekend days.
- Once an hour, bus continues to Neshaminy Mall





# Route 19/70

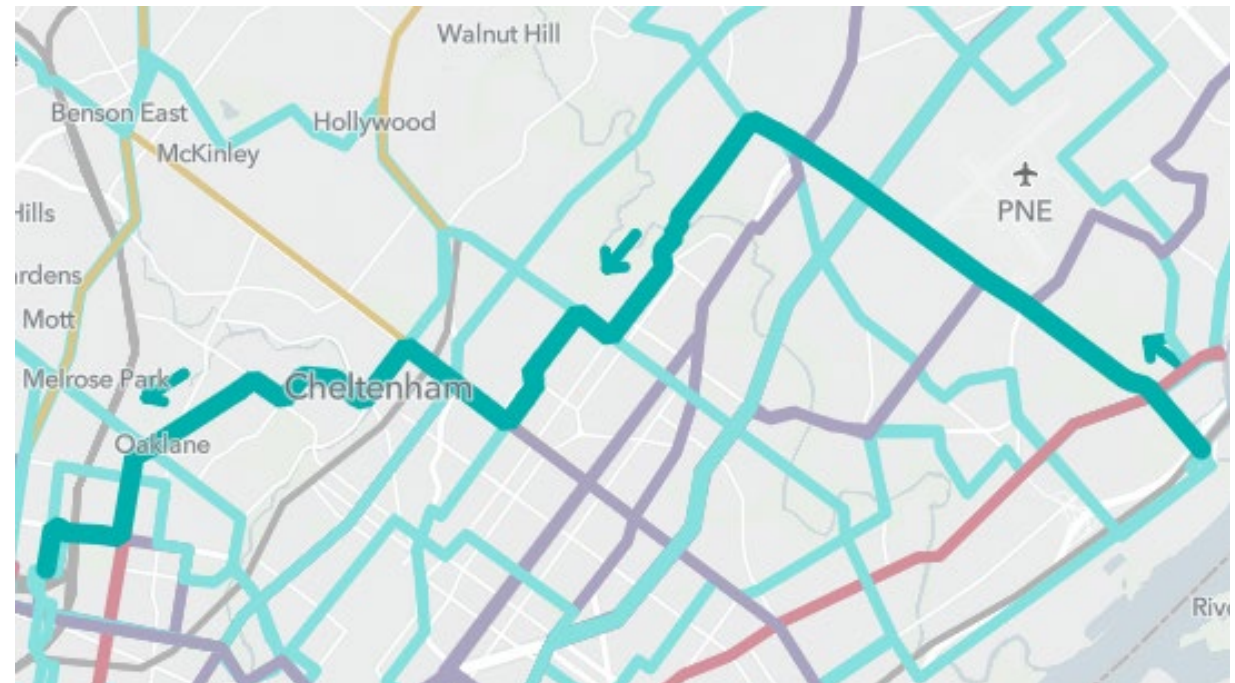
Fern Rock Transportation Center to Torresdale Regional Rail Station



## Proposed Route 19/70

Fern Rock Transportation Center to Torresdale Regional Rail Station

- 30-minute service that travels on Grant Avenue, Algon, Whitaker, Cottman, Oak Lane and 5<sup>th</sup> to Fern Rock TC
- Combines parts of Route 19 with parts of Route 70 and connects to Fern Rock instead of Frankford
  - Transfer to frequent bus service to get to Frankford (Route 66, 20/50 or 58)



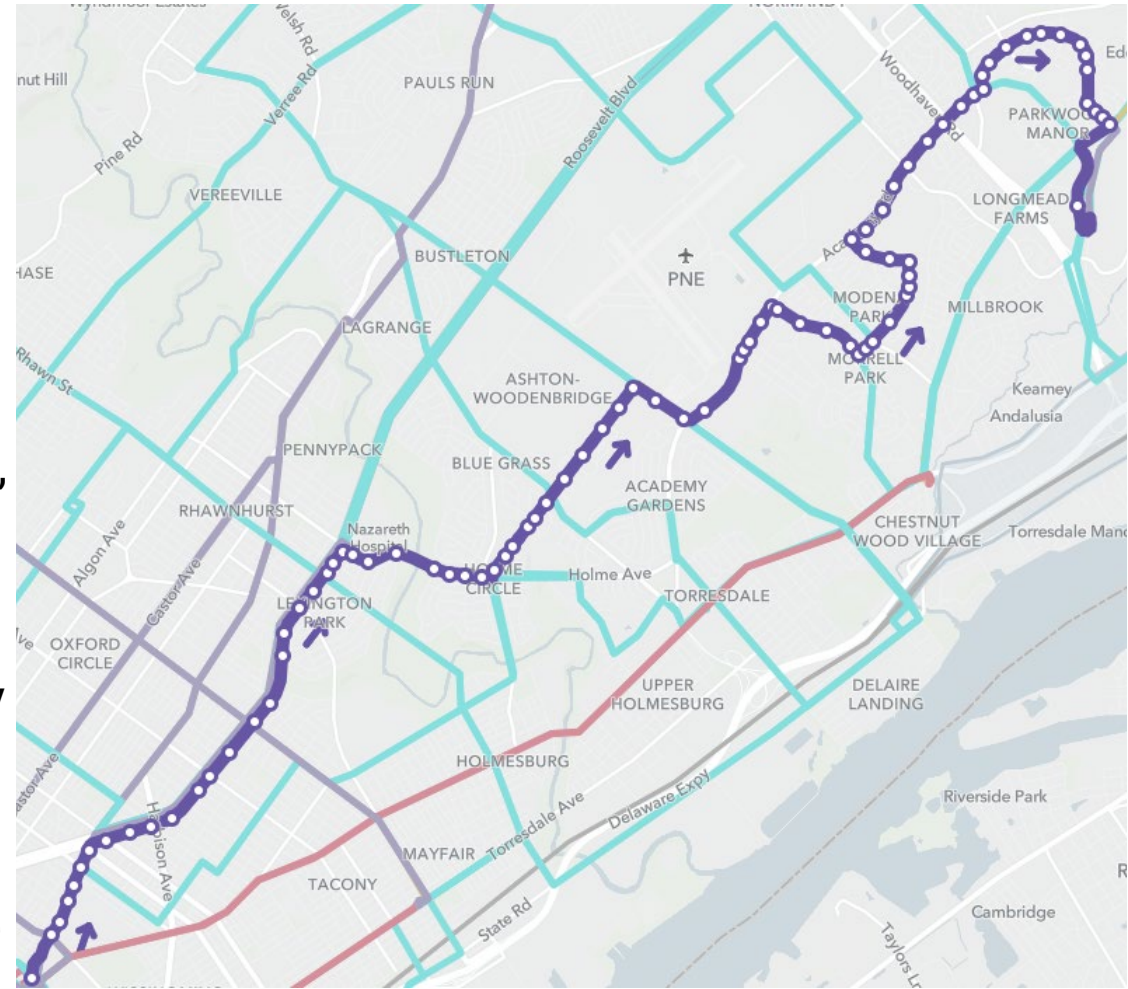
# Route 20/50

Philadelphia Mills to  
Frankford Transportation  
Center



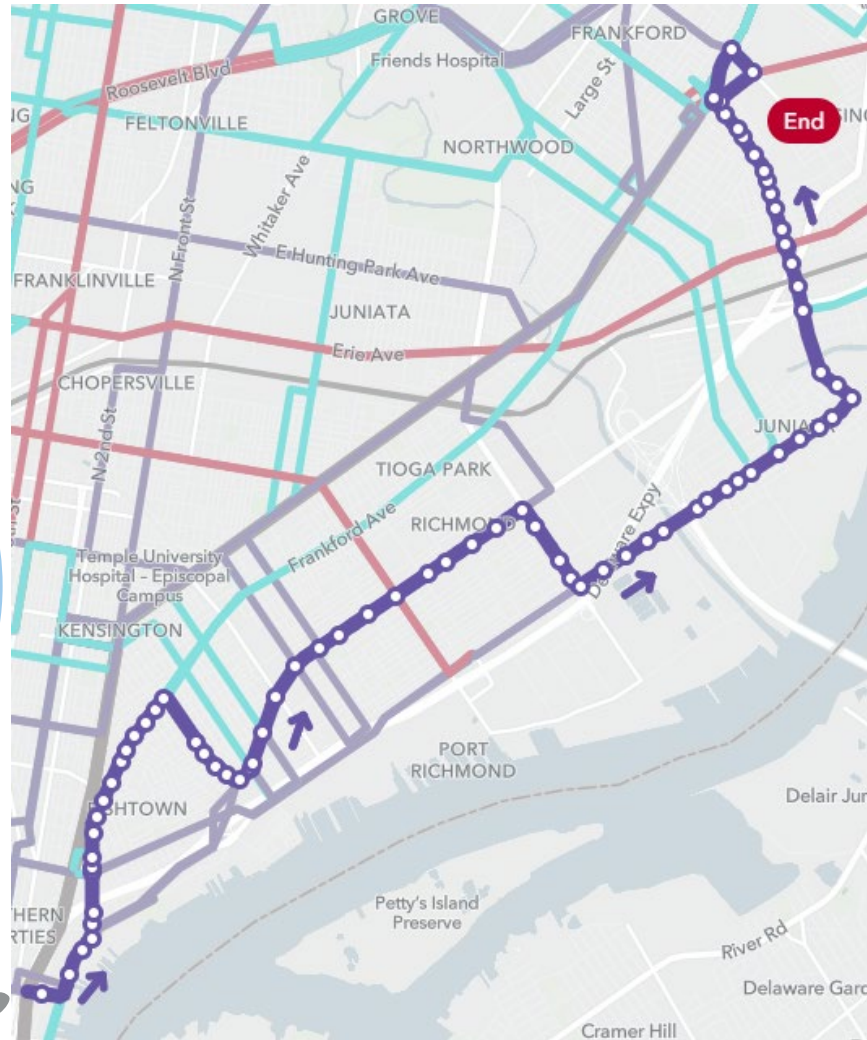
## Proposed Route 20/50 Philadelphia Mills to Frankford Transportation Center

- **Maintains frequent route** - at least every 15 minutes every day, all day.
- Minor alignment changes to bus route to make route slightly straighter and more direct.
  - Uses Grant to Ashton to Holme instead of Academy to Ashton to Holme.



# Route 25

## Frankford Transportation Center to Spring Garden Station



## Proposed Route 25

### Frankford Transportation Center to Spring Garden Station

- **Frequent bus route** - every 15 minutes every day, all day
- Shorter alignment that ends at Spring Garden Station.
- Shorter alignment increases service reliability.
- Transfer to Route 556 to get to South Philadelphia
- Travels on York Street and Frankford through Fishtown

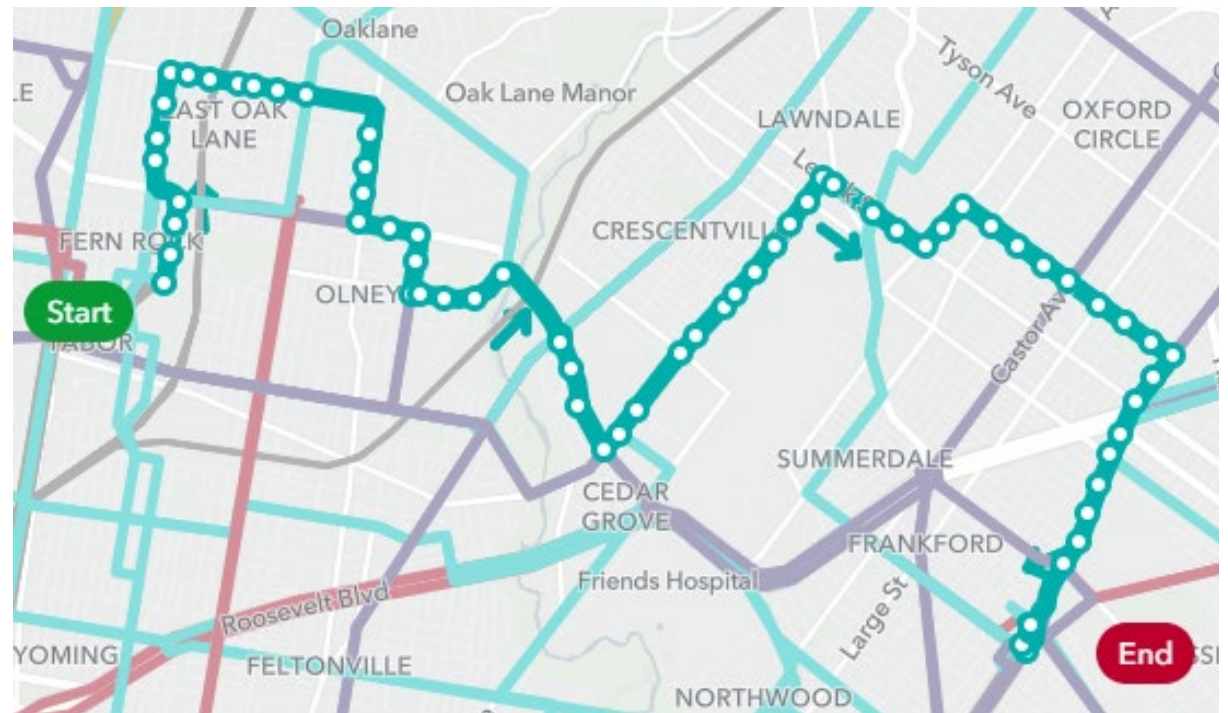
# Proposed Route 26/K

Fern Rock Trans. Center to Frankford Transportation Center

- Eastern half of Route 26
- Slightly different alignment – travels on Bustleton and Magee, to Tabor, Adams, 2<sup>nd</sup> and 11<sup>th</sup> to Fern Rock Transportation Center
- Bus every 30-minutes. Less frequent than Route 26 but better aligned with demand.
- Connections to frequent bus routes and MFL

## Route 26/K

Fern Rock Trans. Center  
to Frankford  
Transportation Center



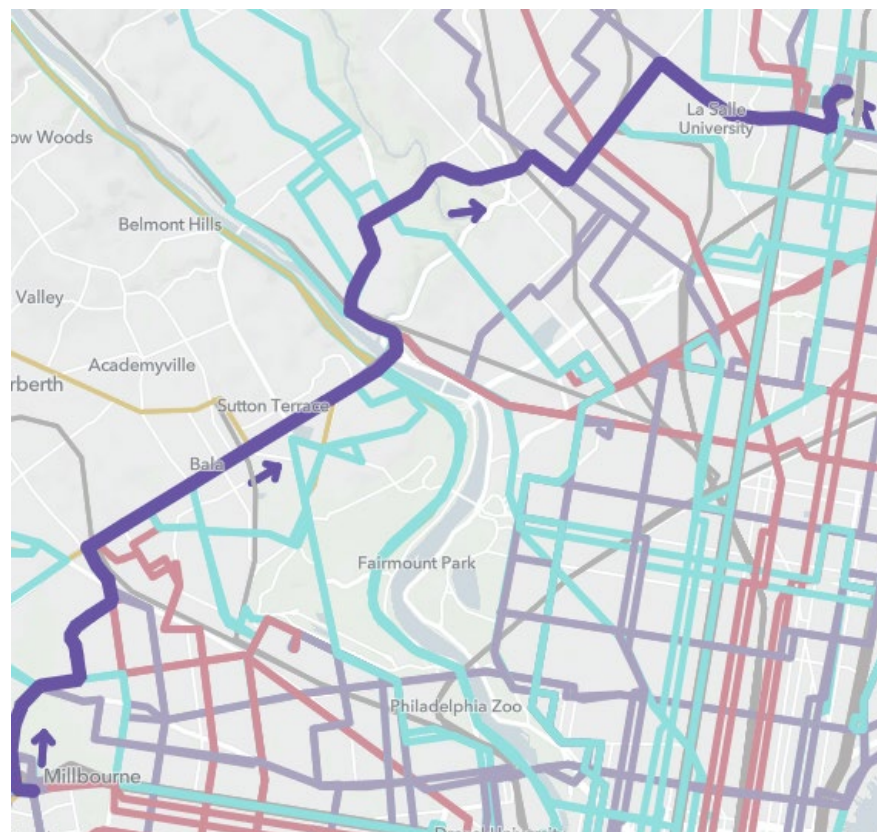
## Proposed Route 26/65

69<sup>th</sup> Street Trans. Center to Fern Rock Trans. Center

- **Frequent Route:** 15 minutes on weekdays and weekends
- Maintains service on Olney Avenue and Chelton Avenue and extends to Wissahickon and 69<sup>th</sup> Street Transportation Center

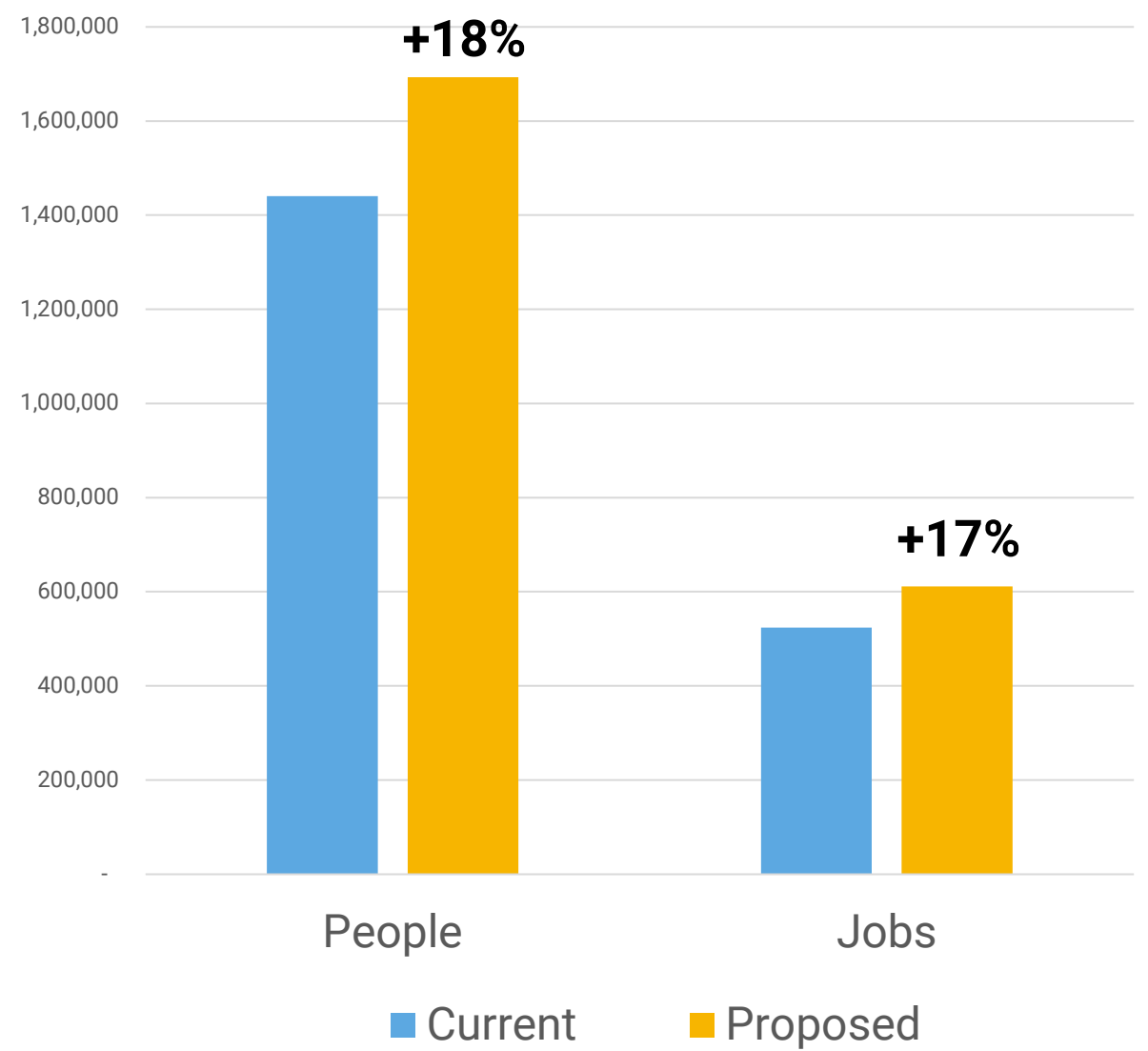
## Route 26/65

69<sup>th</sup> Street Trans. Center  
to Fern Rock Trans.  
Center



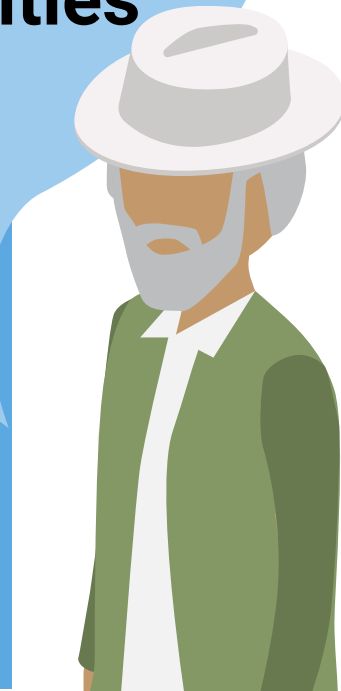
# People and Jobs within ¼ mile of Frequent Transit (Weekdays at Noon)

**Access to  
Frequent  
Transit**

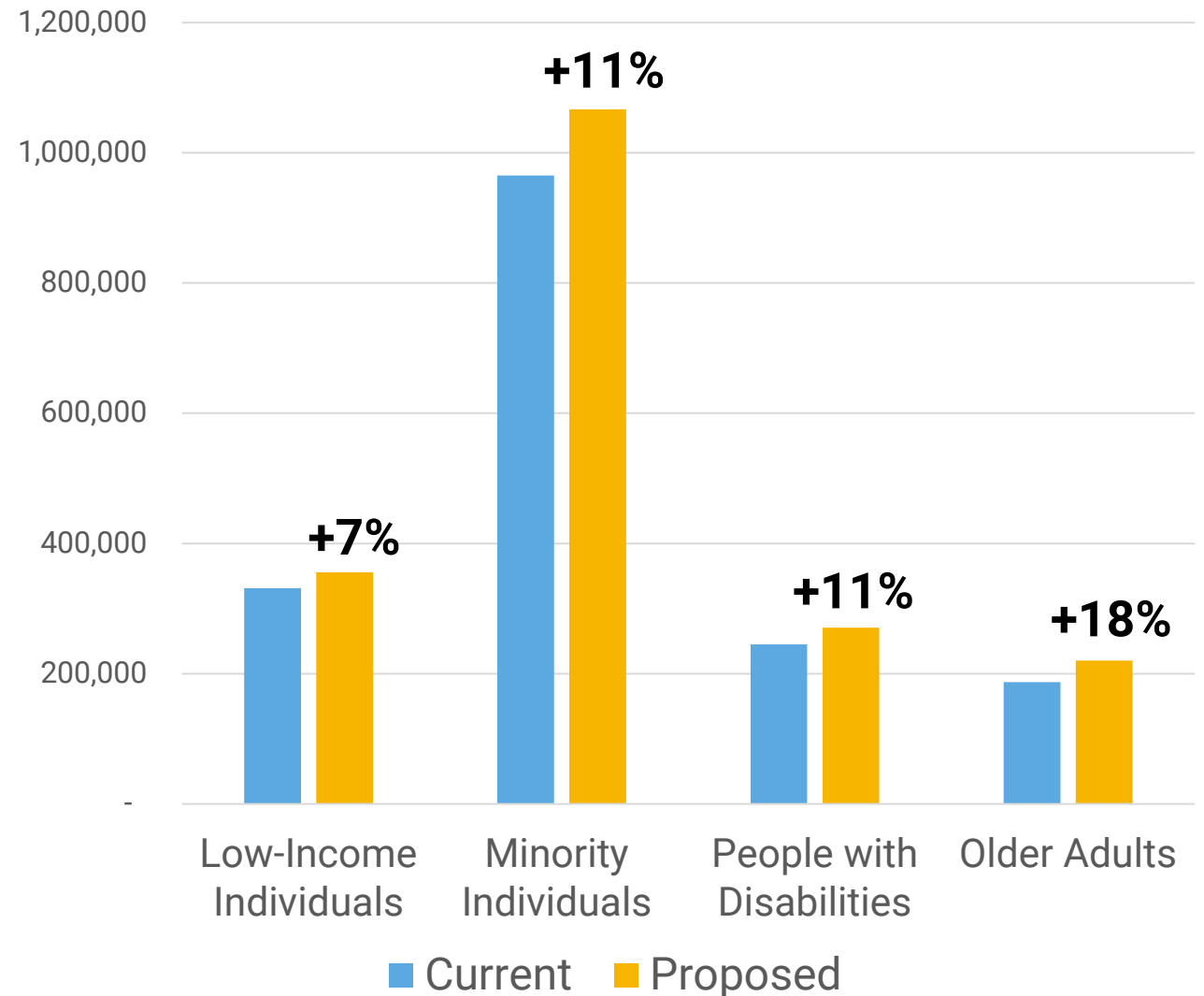


## Access to Frequent Transit:

- Low-Income
- Racial Minorities
- Older Adults
- People with Disabilities



## People within ¼ mile of Frequent Transit (Weekdays at Noon)





We're  
**not finished**  
listening!



# What's Next

- Meeting people where they are – at bus stops, and at transportation centers
- Updated materials that are **easier to understand**
- Make it easy to see **what has and hasn't changed**
- Provide simpler information on **individual routes**



# Project Website

**SEPTAbusrevolution.com**

- Weekly updates and responses to comments

## Explore the Updated Draft Network

From more frequent routes, to straighter commutes: Find out how your route works in the new draft network!

SYSTEM MAPS

SLIDER MAP

REMIX MAP

## Route By Route Information

PICK A LINE

LIST OF PROPOSED CHANGES TO INDIVIDUAL ROUTES

## Route Information By Sub Area

PICK SUB AREA



Bus Revolution®

Want to leave a comment or speak to the team? Email us at [busnetwork@septa.org](mailto:busnetwork@septa.org) or call us at 267.291.6045

1234 Market Street Philadelphia PA 19107 • 215 580 7853 TDD/TTY  
• ©SEPTA • All Rights Reserved.



# Join us for a Bus Revolution webinar

- Mondays 6:30-7:30 PM
- Register online or look for email alert

Monday	Areas
<del>April 3</del>	<del>South and North Philadelphia</del>
<del>April 10</del>	<del>No Meeting</del>
<del>April 17</del>	<del>West Philadelphia and Center City</del>
<del>April 24</del>	<del>Northwest Philadelphia</del>
May 1	Northeast Philadelphia
May 8	Bucks, Chester, Delaware and Montgomery Counties

# Project Bus Tour

- We'll be at Transportation Centers and bus stops around the region.



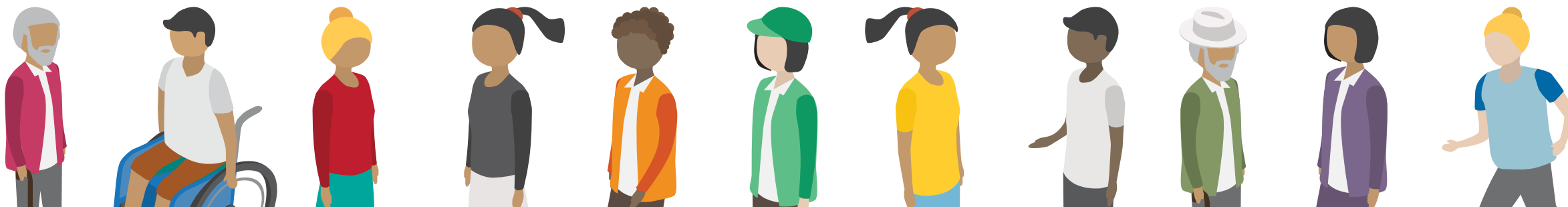
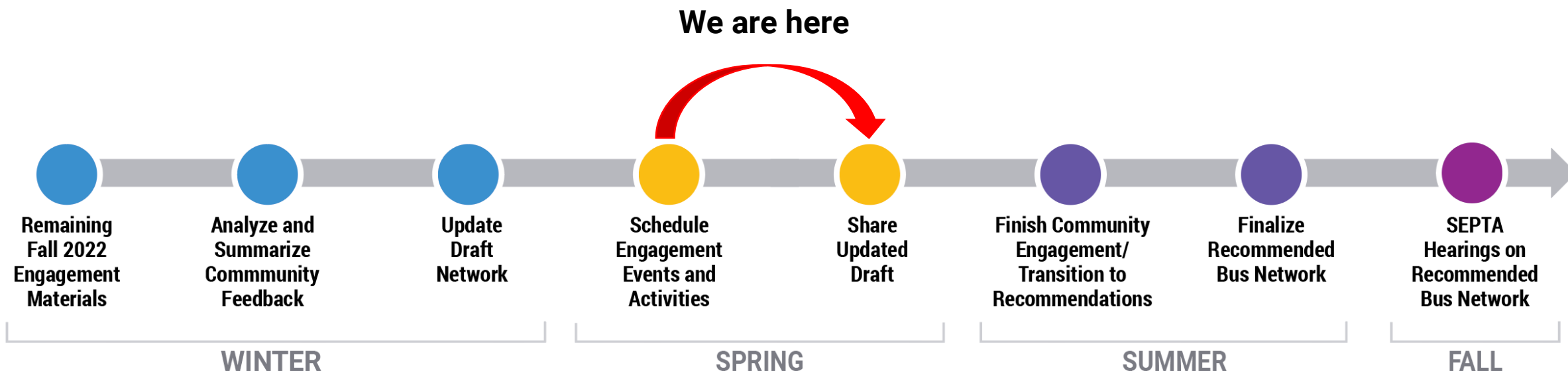
Date	Location and Time
Monday April 3	69 <sup>th</sup> Street Terminal 3 PM to 6 PM
Tuesday April 4	Norristown Transportation Center 7:30 AM – 9:30 AM  Plymouth Meeting Mall 10 AM to 1 PM
Tuesday April 11	Olney Transportation Center 3 PM to 6 PM
Wednesday April 12	15 <sup>th</sup> and JFK 3 PM to 6 PM
Thursday April 13	Frankford Transportation Center 7:30 AM – 9:30 AM
Tuesday, April 18	Chester Transportation Center 7:30 AM – 9:30 AM  Darby Transportation Center 10:30 AM – 1 PM
Wednesday, April 19	23 <sup>rd</sup> & Venango Loop 7:30 AM to 9:30 AM  Wissahickon Transportation Center 10:30 AM – 1:00 PM
Wednesday, April 26	Willow Grove Mall 3 PM to 6 PM
Thursday, April 27	Broad & Oregon 3 PM to 6 PM
Tuesday May 2	Frankford Transportation Center 3 PM to 6 PM
Wednesday May 3	69 <sup>th</sup> Street Terminal 7:30 AM to 9:30 AM
Thursday May 4	Olney Transportation Center 7:30 AM – 9:30 AM


# Community Meetings



Date	Location
Wednesday, April 5th	East Passyunk Rec (1025 Mifflin Street)
Wednesday, April 12th	Kingsessing Rec Center (4901 Kingsessing Avenue)
Thursday, April 13th	Mayfair Community Center (2990 St Vincent Street)
Wednesday, April 19th	Bustleton Memorial American Legion Post 810 (9151 Old Newtown Road)
Thursday, April 20th	Simons Recreation Center (7200 Woolston Avenue)
Tuesday, April 25th	Northwest Regional Library (68 W. Cheltenham Avenue)
Wednesday, April 26th	Dropsie College (2331 N. Broad Street)
Thursday, April 27th	SEPTA Headquarters (1234 Market Street) – focus on school service
Monday, May 1st	St. Joseph's University
Wednesday, May 3rd	Guerin Recreation Center (2201 S. 16th Street)
Thursday May 4th	Community Center at Visitation (2646 Kensington Avenue)
Tuesday May 9th	Holy Name of Jesus Parish (701 Gaul Street)
Wednesday, May 10th	Lucien Blackwell Community Center (761 N. 47th Street)
Thursday May 11th	First African Baptist Church of Darby Township (901 Clifton Avenue, Sharon Hill)

# Bus Revolution Year Ahead: 2023





**Q&A  
Discussion**

**Join the Revolution!**  
**septabusrevolution.com**

